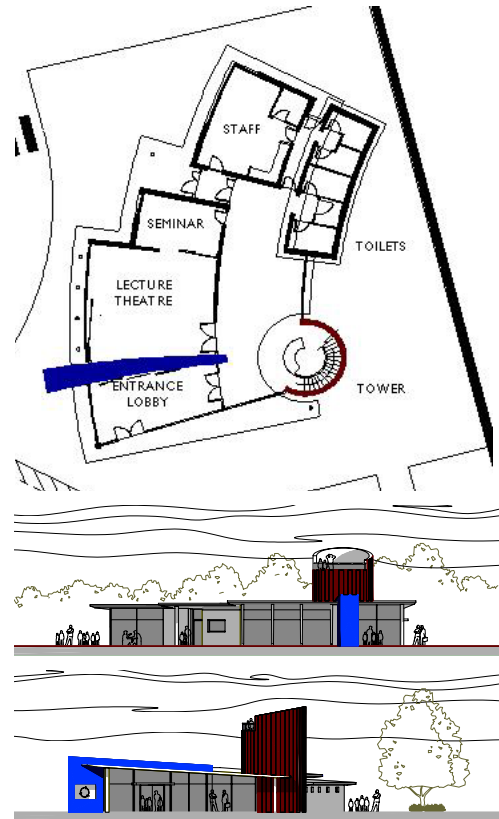




work

Leyland Waste Technology Park

Proposed Visitor Centre



Project Profile

At the end of 2002, we were invited by Axis, Landscape Architects, to submit a design for a Visitor Centre, for a new recycling development, in Leyland, which will be used to illustrate and promote the procedures and benefits of recycling.

The centre combines facilities for visiting groups along with accommodation for the recycling staff. The spacious entrance lobby will provide a sheltered assembly point with educational and interactive material. The adaptable lecture theatre is suited with a small seminar room and these spaces can be used flexibly for differing groups. The tower accommodates a small work room at first floor, and a viewing platform above.

It is intended that the building will be constructed using ecologically friendly methods and materials, in an effort to complement the ethos of the recycling plant.