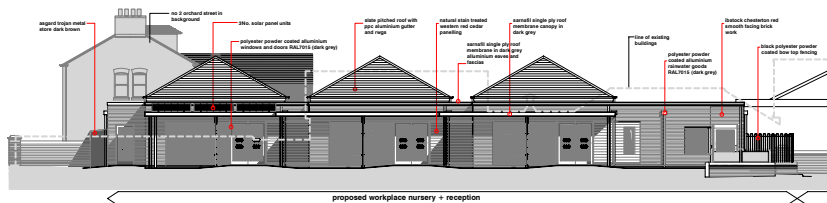




learn

Victoria Road Workplace Nursery, Northwich

Client : Cheshire County Council
Value: £1.46M
On site: March 09 to February 10
Programme: 46 weeks
Contractor: Conlon Construction Ltd



Project Profile

Victoria Road Workplace Nursery is designed to deliver full day care to 69 children between the ages of six months and four years. The new development, which includes a reception class base alongside the Nursery, will extend and compliment the community and education facilities at Victoria Road Community Primary School and Children's Centre.

The passive design responds to orientation by creating a soft permeable skin to the south facing elevations and a hard, relatively impenetrable skin to the north and east. The three large learning and play spaces form the core of the accommodation with predominantly south-east facing glazed walls exploiting the benign aspect and allowing a natural progression from inside to outside learning through the transitional structure. The structure provides both shade and shelter to the glazed elevations.

The three learning spaces each have a similar footprint, with storage and a moveable wall acting as dividers. This arrangement allows flexibility in the way the different age groups can work together. On occasions it is envisaged that the Reception Class will function independently and it is possible that on determining the detailed fitting out the two Nursery spaces will become more integrated.

External play spaces have been located to interface with the School's external play and to be well protected from the site boundaries.