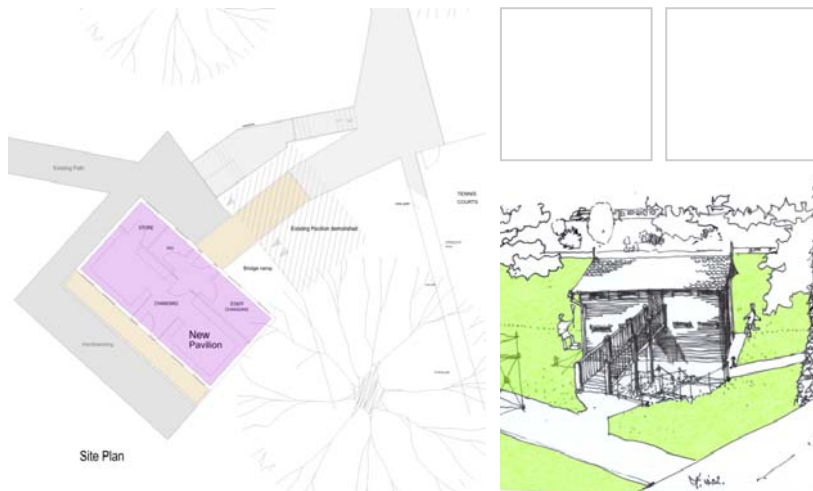




# learn

## The Queen's School, Chester Sports Pavillion

**Client:** Queen's School  
**Value:** £220,000  
**On site:** March 2005  
**Programme:** 20 weeks  
**Contractor:** Acorn Construction



### Project Profile

The small, two storey Sports Pavillion was developed on the site of an existing storage shed. It sits between the Queen's School tennis courts and grass pitches, beneath the historic Chester City Walls. Therefore careful consideration had to be given to its design and construction, resulting in close liaison with the city planners and archaeologists to gain Planning Approval and Conservation Area consent.

The building draws on the traditional language for small sports pavilions. It has a simple steel frame, clad in dark stained horizontal timber boarding, with white painted windows and green mineralized felt shingles for the roof.

Internally, the majority of the ground floor is dedicated to storage for sports equipment, with a small plant room and an accessible wc. At first floor level, there are changing facilities for staff and pupils, and two further toilets. The interior has a robust, easy to clean finish.

The first floor is reached by a simple external staircase. This also leads to a balcony which provides a viewing platform overlooking the grass pitches and running track.