



# learn

## The Queen's School, Chester

### Lower School Link and Teaching Accommodation

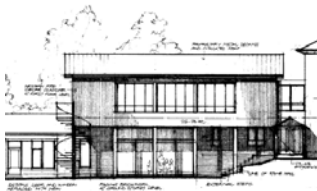
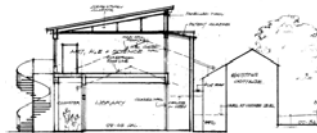
**Client :** Queen's School

**Value:** £350,000

**On site:** 2004

**Programme:** 9 months

**Contractor:** Hankinson Construction Ltd



## Project Profile

A private day school for girls, Queen's Lower School occupies a location close to the City Centre, and is accommodated within two former residential villas.

In 2001 TNW were commissioned to carry out a masterplanning exercise on the site, resulting in several live projects.

A main entrance and link corridor entrance was built to join the two villas together across the garden. The single storey structure is of simple steel and timber frame construction with a pitched, artificial slate roof, and is in keeping with the residential facade to Liverpool Road. The link was carefully positioned to retain a number of mature trees in the garden

A two storey extension was designed to the rear of Nedham House. A new library is accommodated at ground floor level, and above there is new specialised teaching space for Art, home Economics and Science. The building is constructed using a steel frame, to allow the first floor to project over the ground floor plan to form a cloister. The materials used are brick at ground floor level, with western red cedar cladding and a pitched metal sheet roof above.